

Kindred Spirits



A home's three bathrooms maintain a consistent style with enough interest to stand on their own

BY ALLISON HARLOW

One of my design principles is that homes need a consistent style from room to room. I don't mean that they should all be the same, but they should have some repeating elements that bring some unity to the design. Consistent details allow a house to age gracefully without any one room stealing the spotlight for a few years, only to fall out of fashion later on.

The three bathrooms featured here are part of a whole-house remodel. It's hard to remember the "before" of this house because the floor plan changed so much. We started by reclaiming a back area of the basement for more room, and then we removed some walls to open up the space. We used the small guest bathroom as a starting point, keeping the toilet in the same location to help control the budget.

The bathrooms connect to the rest of the house through their color palettes and clean, simple finishes. To create the unifying quality I was after, all three baths have custom alder vanities and accents, white subway tile, and simple glass showers. The traditional tilework and simple finishes are the perfect backdrop for the more individual selections that make each bath unique. □

Allison Harlow is the founder and principal designer at Curio Design Studio in Marquette, Mich. Photos courtesy of the author.





GUEST BATH

Of the three bathrooms in the house, this was the only one that had zero revisions from the design presentation to the finished room. Well, that's not exactly true—we did end up selecting a new light; the one in the design spec was out of stock by the time we went to order it. But otherwise, this bathroom went from concept to reality with almost no changes. The black shower door and mirror details complement the black cabinets in the kitchen, and the warm alder vanities create a direct connection between the guest bath, kids' bath, and master bath. White subway tile on the walls and 2-in. porcelain hex tiles on the floor are the perfect canvas for bolder finishes like the brass faucet, black-framed mirror, and black grids on the shower glass.



SOURCES

SHOWER TILES Daltile, Rittenhouse Square

FLOOR TILES Daltile, Keystones Mosaics 2-in. hex in Black

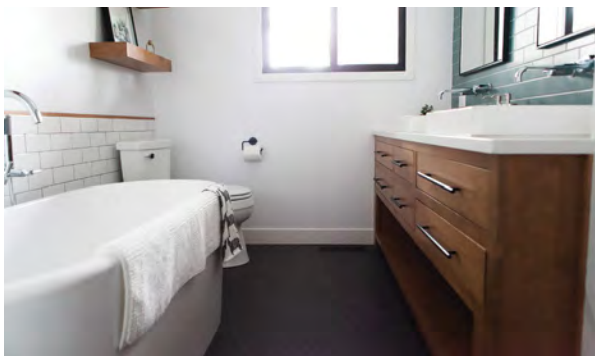
PENDANT LIGHTING Rejuvenation, Cedar & Moss Globe 10-in. Pendant

FAUCET Kohler, Purist in Brushed Gold

SHOWER GLASS Upper Hand Window Company, custom

KIDS' BATH

The shower in the kids' bathroom has white subway tile and dark floor tile like the other baths, but we used light-green subway tile around the vanity for a fun splash of color. Once again, the vanity is alder and the countertop is white, but instead of a single undermount sink, we used a pair of vessel sinks—one for each child. This is the only bathroom with a tub—the 6-ft. freestanding acrylic bathtub is the centerpiece of the space. The shower has a half-wall that separates it from the tub, and the glass atop it gives the shower a lightness that keeps it from visually shrinking the space. Black-framed mirrors and overhead light fixtures match the black decorative elements in the other bathrooms.



SOURCES

WALL TILES Daltile, Rittenhouse Square

BACKSPLASH TILES Fireclay Tile, subway in Flagstone

PENDANT LIGHTING Rejuvenation, Mist Rod Pendant

SINKS Kohler, Vox Rectangle

MASTER BATH

The master bath is all about soothing simplicity, with mostly white finishes and occasional pops of color. Once again we see white subway tile on the walls and dark porcelain on the floor. The brass faucets and shower controls are similar to those in the guest bath, and the black accents that appear in the other baths show up here as black pulls on the alder vanity, which holds a pair of white vessel sinks. Although it's not a large space, we put the toilet in its own room with a pocket door so it can be closed off from the rest of the bath for privacy. The decorative wall in the toilet space features custom wallpaper made of a blown-up image of an agate, a gemstone common in this area of Michigan.



SOURCES

FLOOR TILES Daltile, Natural Hues 8-in. hex in Midnight Blue

WALL TILES Daltile, Modern Dimensions 4x12 in Arctic White

SINKS Kohler, Vox Rectangle

FIXTURES Kohler, Purist in Vibrant Brushed Moderne Brass

ACCENT WALL Wallpaper Murals Your Way, custom

