

A Case for Double- Stud Walls

Straightforward construction, common materials, and low embodied carbon are just some of the benefits of this superinsulated assembly

BY DAN KOLBERT

The ideal wall is debated constantly among conscientious builders, and unsurprisingly, opinions vary. Since my company is focused mostly on renovations, and we rarely build more than one new house per year, I have a lot of time to rethink my wall sections between each build. In the end, I keep coming back to the method we've used since we built our first high-performance home more than a decade ago—double-stud walls filled with dense-pack cellulose insulation. This double-stud wall approach not only uses an insulation you can feel good about, but it's relatively affordable, easy to build, and can dry in both directions.

Even the best-performing wall design will only succeed if it's buildable. The more complex water management, air-sealing, and other details become, the more likely you'll fail.

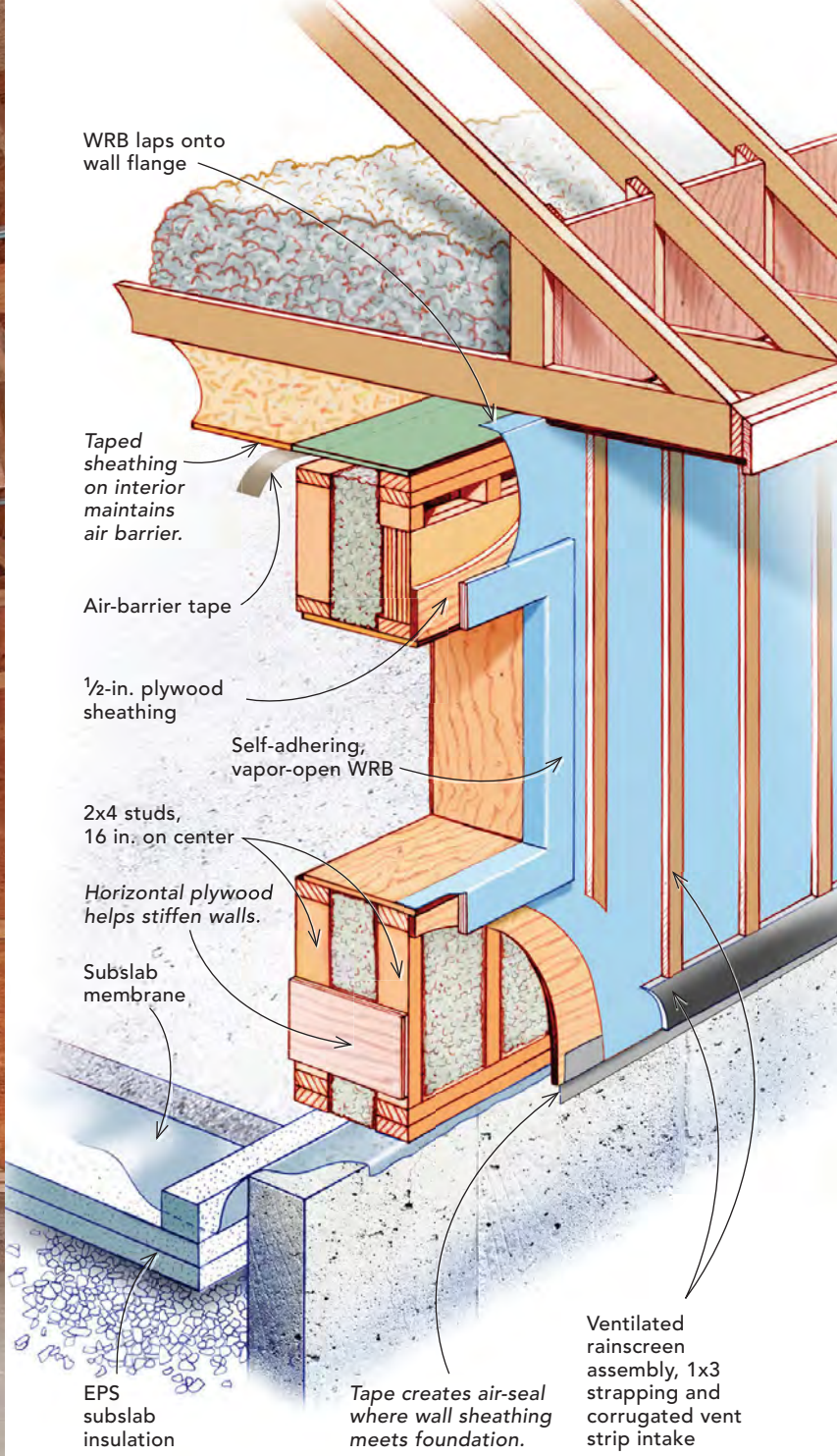
There's nothing in a double-stud wall that a competent carpenter doesn't already know how to do. We make our walls about 12 in. thick, for an R-value of about R-44, with a full 5 in. of thermal break between the two 3½-in.-thick stud walls. By contrast, other methods



of building high-performance, thermally broken walls, like installing rigid foam or other continuous exterior insulation, require additional detailing to get the flashing and air barrier right, and to provide adequate nailing for trim and siding. Plus, exterior insulation has to be protected from rodents and insects. With double-stud walls, all of the insulation is inboard of the sheathing.

Sequencing the build

There are different ways to build a double-stud wall, but my preference is to keep it as much like building a standard house as possible.



This means the exterior walls are built first and are the load-bearing portion of the assembly. This is one area that's actually easier than single-wall construction—the exterior walls are 2x4 rather than 2x6, so they're faster to build and easier lift into place. With 2x4 exterior walls, keep in mind that you may need an engineer to sign off on your wall design, especially if the walls are taller than normal or you want to space studs 24 in. on center, and that you will need to size your headers to fit on 2x4 jacks.

We typically get the entire exterior of the house framed all the way to the ridge, then come back and build our interior walls. Since

A VAPOR-OPEN ASSEMBLY

Our 12-in.-thick double-stud wall assembly includes two 2x4 walls separated by 5 in. of uninterrupted insulation space. Though we're confident that these walls have no greater chance of moisture issues than any other assembly, we use plywood sheathing, which becomes more permeable than OSB when it gets wet; a vapor-open, fully-adhered water-resistive barrier (WRB), which also provides the exterior air-sealing; and only a class III vapor retarder when combined with ventilated cladding. Cellulose insulation is used because it can absorb and redistribute moisture, then dry when conditions are right.

OUTER WALLS

SET THE STAGE

After snapping lines for the walls, we fasten a pressure-treated sill plate to the foundation. Although a redundant measure, we always include sill seal under the plate for air-sealing.



OUTER WALLS ARE EASY We rely on the outer walls to carry the loads of the structure, but since there isn't much concern about limited cavity insulation or thermal bridging, we use 2x4s and space them at the conventional 16-in. layout.



WHY PLY We prefer plywood, which is relatively vapor-open compared to OSB options, to allow the wall assembly to dry to the exterior. We pad out window and door openings to match the thickness of the rainscreen before installing the self-adhering WRB, making it easier to integrate the window flashing later.



THINK AHEAD Split-release air-sealing tape is a clean and effective way to connect the wall framing to the foundation below. Apply it before the WRB and rainscreen system are installed, overhanging it to be adhered to the concrete after the wall is tipped into place.



LET IT BREATHE The vapor-open nature of plywood only helps if you choose a vapor-open WRB and provide ventilation between the WRB and the cladding.

FURRING WHILE IT'S FLAT

Before lifting or tipping the wall into place, we like to get the rainscreen system in place. Our go-to is a corrugated plastic intake vent and 1x3 battens.



they're not load bearing, there are no structural headers in the interior walls. You can align the interior wall plates against the exterior walls and transfer window and door locations, and then frame the interior walls short enough so that you can lift them into place under the ceiling joists or strapping. Another benefit of double-stud walls is that you can lay out the exterior walls specifically for sheathing and the interiors specifically for drywall.

Some builders have tried to use 2x3s for the interior half of double-stud walls. It may seem like a good idea, but it's not worth the trouble. The quality of 2x3 lumber is typically awful, and even if the pieces are straight when you get them, they tend to warp and twist after installation.

If your house is slab-on-grade, the double walls may not be sitting on much. We typically have an 8-in. foundation wall, then 4 in. of perimeter foam, then the slab. With a 12-in. wall thickness, our interior wall is sitting on top of foam. To deal with this, we cut scraps of 2x or strips of scrap plywood to 12-in. lengths and use them to connect the two walls at the base to hold the interior wall rigid.

There's a lot to like about cellulose

I'm always looking for ways to simplify the construction process, and I think a building with one insulation material is better than one with

multiple. Cellulose allows us to use the same material everywhere except at the foundation and slab. It is an affordable material, has very low embodied energy, can be repaired, and works very well as a buffer when vapor drive spikes. It can hold and redistribute moisture, releasing it to the dry side, in ways that foam, fiberglass, or mineral wool can't. Finally, using wood rather than foam or other petroleum-based materials is key to reducing the carbon footprint of new buildings, and cellulose is wood. (On that note, it's important to make sure that the cellulose your installer uses is a borate-treated product for resistance to fire, insects, and rot.)

While our climate is overwhelmingly heating dominated, with vapor drive to the exterior for much of the year, our summers are getting hotter and more humid. This increases my interest in wall assemblies that allow drying in both directions—another reason why skinning a house in rigid-foam insulation makes me more nervous than the cold-sheathing risk of a double-stud wall packed with cellulose (see "Modeled risks remain unproven in our builds," p. 37).

It is critical to note that all of the houses our firm builds include a rainscreen of some sort, which varies depending on the siding. We typically use a three-dimensional mesh product like Benjamin Obdyke's HomeSlicker for shingle siding, and 1x3s or plywood ribs for clapboard siding. This allows any moisture from vapor drive in

INNER WALLS



CAP THE WALL To connect the inner and outer walls and maintain the continuity of the air barrier, we install strips of sheathing to the outer-wall top plates, overhanging toward the inside. The flanges should be a few inches wider than the total wall thickness.

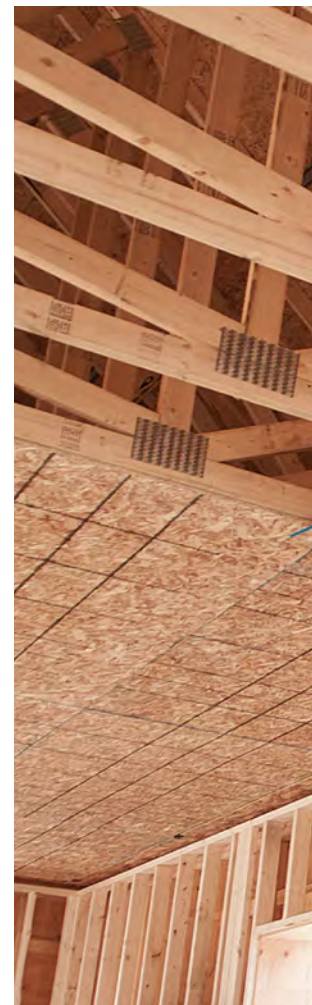
OUTER MARKS THE INNER We build the inner wall using a double bottom plate. The first bottom plate is fastened to the slab, and then the second is held, along with the top plate, against the outer wall for marking, eliminating concerns about offset framing.



ROOM TO RAISE To make the inner stud wall easy to tip into place, we frame it 1½ in. shorter than the exterior—easy to do by simply using one less plate than the exterior wall.



FASTEN THROUGH TO FRAMING Once the wall is upright, it has to be plumbed in both directions before being fastened. We use screws driven through the top plate and into the flange above, which should already be backed up by the ceiling framing.



either direction to drain or evaporate instead of getting trapped and rotting out the siding, sheathing, or both. I think it is very dangerous to not include a rainscreen in any superinsulated wall assembly.

A skilled insulation installer is a must

Once the house is framed, things progress pretty much as on any other house. Unlike with other thermally broken methods, window and door installation and flashing is the same as on a “standard” assembly. The drainage plane is in line with the window flanges, making lapping of materials simple. And our clients love the deep interior window stools these thick walls create.

Since we’re not production builders and all of our projects are custom homes, it’s hard to develop meaningful cost comparisons. The exterior walls are less expensive than most high-performance assemblies, since 2x4 walls use less material and less labor. The interior wall adds cost, but the walls are easy to lay out and fast to build, and electricians and plumbers love that they can do their rough-in with far less drilling. The insulation will cost more than in a code-level wall, but not necessarily more than a home with continuous exterior rigid foam and cavity insulation. On top of all that, you have to weigh the savings in the homeowners’ heating bills, and in the durability of the home itself.

Double-stud walls do require highly skilled installers to get the right density of the cellulose insulation. We break up walls by blocking between bays with plywood or netting so the installers don’t have to dense-pack huge volumes.

A common question is whether you can use batts instead of dense-pack cellulose. We’re cautious of that approach. I think the reason that moisture-profile modeling of double-stud walls misses the mark is that it doesn’t take into account the moisture-buffering capacity of cellulose. No other readily available insulation can mimic this phenomenon of absorption and redistribution. Dense-pack cellulose is fairly common in New England, less so in other parts of the country.

There are other blown-in products available, such as mineral wool and fiberglass. Mineral wool may have sufficient density to mitigate convective loops or moisture transport, but I have less faith in blown-in fiberglass. And batt insulation of any type is extremely difficult to install well enough for safety. Finally, while I am undecided on the need for a “smart” vapor retarder with cellulose, with any other product I would definitely recommend a variable-permeance membrane like SIGA’s Majrex, CertainTeed’s MemBrain, or Pro Clima’s Intello. □

Dan Kolbert is a builder and remodeler in Portland, Maine.
Photos by Scott Gibson.



KEEP IT CONTINUOUS

After skinning the ceiling with sheathing, we tape all the seams, including the connection to the double-stud wall flange, to maintain the continuity of the air barrier.

Modeled risks remain unproven in our builds

The main argument that I hear against dense-packed double-stud walls is the concern about “cold sheathing” that comes up when the assemblies are computer modeled. I consider this the Yeti of building science—it is much discussed, yet rarely seen.

We returned to our first double-stud house several years ago to replace a window with a door. The window was on a wall that was not only north-facing, but faced the water as well. If there was anywhere on the house where we should have seen moisture problems, it was here. Nevertheless, when we cut into the wall we saw no signs of condensation or leaking on the sheathing.

On several more recent houses, we have buried OmniSense wireless monitors in the walls and ceilings to measure temperature, relative humidity, dew point, and wood moisture content. Nothing in the data indicates the kind of problems that the modeling suggests is unavoidable, at least in our area (climate zone 6). Even so, if these walls are even theoretically dangerous, why do we continue with them? Simply put, I think they are better walls on almost every front.