



Updating Midcentury Modern

Three remodels evoke the spirit—and staying power—of modernist design

BY KATIE FLYNN

From architecture to furniture to appliances, midcentury modernism is having a “moment” in the spotlight. At its inception during the first half of the 20th century, the modernist design movement saw architects re-evaluating stylistic expression, exploring concepts around society and community-building, and adopting new approaches to construction. They believed that architecture should be free from nostalgia and should reflect the spirit of the time in which it is built.

Midcentury-modern homes began appearing in the 1950s as the first broad-market realization of the modernist ethos in America—thanks, in part, to a group of ex-patriot European architects working primarily in New England, Chicago, and California following World War II. Among those pioneers were architects Walter Gropius, Marcel Breuer, and Ludwig Mies van der Rohe, whose work helped shape what have become telltale elements of the style: exposed structure, natural materials, low-slung roofs, modest scale, clean lines, open floor plans, extensive glass, and omission of fussy ornamentation. Those



MIDCENTURY MODERN AT A GLANCE

- Exposed structure
- Natural materials
- Low-slung roofs
- Modest scale
- Indoor/outdoor connection
- Clean lines
- Open floor plans
- Extensive glass
- Omission of ornamentation



To see more photos of these case studies, visit [FineHomebuilding.com/magazine](https://www.finehomebuilding.com/magazine).

INCREASED CAPACITY



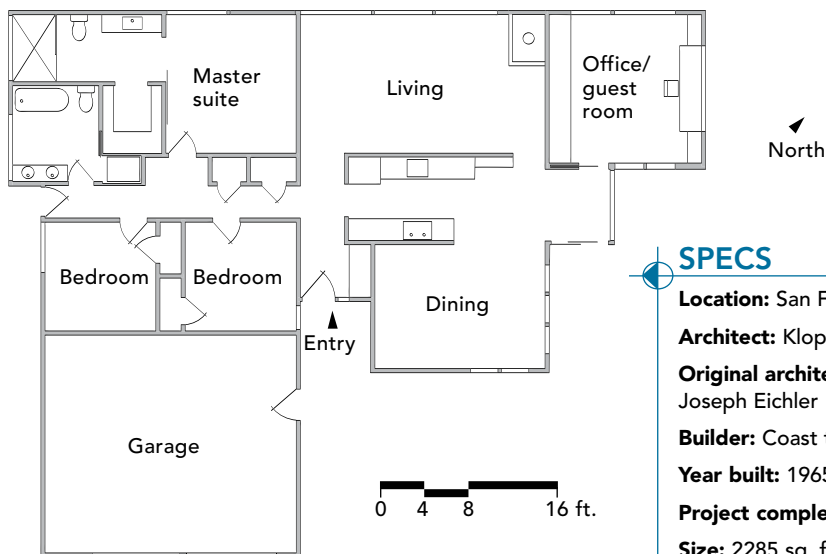
The modestly scaled Mid Mod Eichler House was recently renovated and expanded by San Francisco-based Klop Architecture. Its initial 1500-sq.-ft. footprint featured rooms scaled just large enough for their intended use, but no larger. Its new owners, a family of four, appreciated the home's efficiency but needed a bit more space. Klop designed a 400-sq.-ft. combination guest room and office, and reworked the bathrooms and storage areas. The house retains many of its original plywood wall panels, which the finishing team sanded and oiled to erase the yellowed patina and bring out their rich color. Where panels had been punctured for wiring or with nails, new panels were finished to match the older wood as closely as possible. By adding several inches of rigid-foam insulation above the roof assembly and tapering it down toward the fascia across the roof overhang, the designers were able to maximize insulation, promote roof drainage, and maintain an elegant slim-fascia profile.

Signature style. The house retains many of its original paneled walls, which were sanded and refinished in place, preserving a classic example of the strategic use of simple materials for bold effect.



Slightly bigger, significantly better.

Expanding the original bathrooms by just a few feet made a big difference. Not only do the rooms feel bigger and brighter, they also include vanity storage.



SPECS

Location: San Francisco, Calif.

Architect: Klop Architecture

Original architect:
Joseph Eichler

Builder: Coast to Coast, Inc.

Year built: 1965

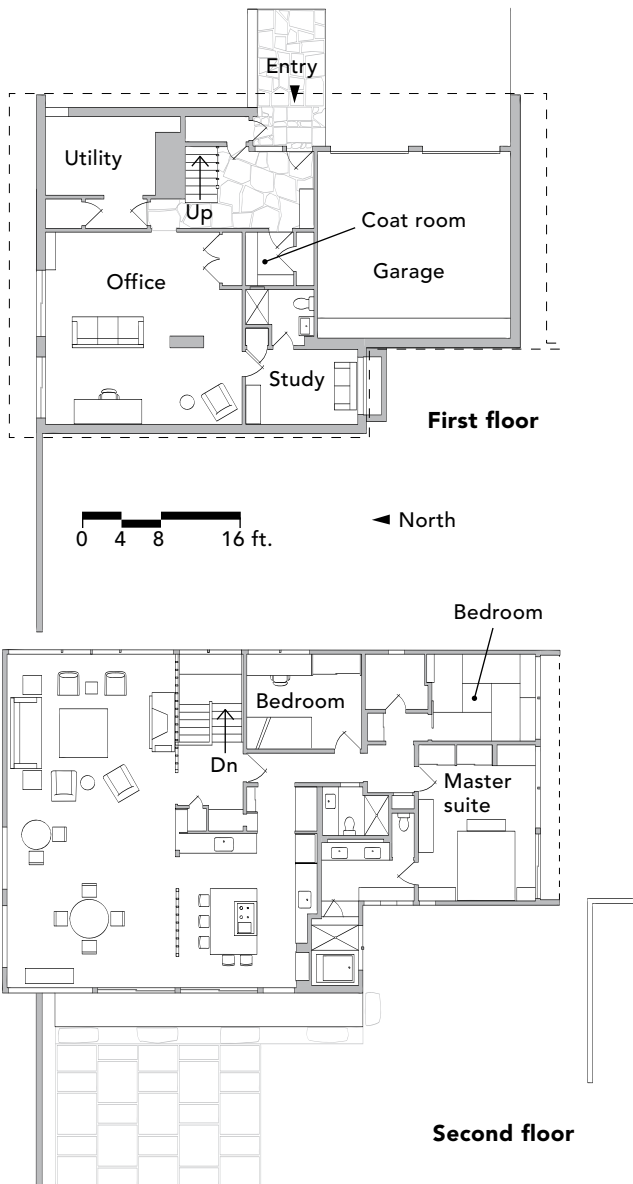
Project completed: 2015

Size: 2285 sq. ft.

CASE STUDY NO. 2

SMART TIGHT FIT

At the William Landsberg House on Long Island, Stephen Moser Architect played tug-of-war with existing partitions to reallocate interior space for improved living conditions. (The original house was designed by Landsberg and is listed on the National Register of Historic Places.) The new owners admired the floating rectangular-shaped structure and were excited about blending its modernist features with their Japanese aesthetic. The bulk of the project included the reconfiguration of the middle of the house; the kitchen was opened up to the living room by replacing a solid wall with a structural screen of staggered horizontal wood blocking. Additionally, the master bath was expanded by incorporating the original laundry room and moving the washer and dryer to the kitchen, where they are hidden behind cabinets. Moser and the clients worked with Henrybuilt to update the kitchen, which is characterized by mango-orange-colored cabinets, a nod to the original design.



very features can present challenges when it comes to updating midcentury-modern homes to 21st-century standards of structural integrity and energy performance while also supporting contemporary lifestyles. But they are worth preserving and improving upon—not just because the style is trending, but also because these houses reflect the deeper spirit of modernism, which demonstrates a kind of freshness and optimism still relevant today.

At Hisel Flynn Architects, we adhere to the fundamental tenets of the modernist movement. For more than 20 years, principal Dan Hisel has specialized in contemporary renovations of older homes. We find that successful updates to midcentury-modern homes are achieved by applying best practices, embracing new technologies, and employing careful design strategies—all of which was at play at the Peacock Farm House, where we reconfigured the entry, main living area, and office to enhance the home's functionality while improving its energy performance. Similarly, Stephen Moser Architect's renovation of the historic William Landsberg House included opening



SPECS

Location: Port Washington, N.Y.
Architect: Stephen Moser Architect
Original architect: William Landsberg
Builder: Golden Eye Construction
Year built: 1951
Project completed: 2016
Size: 3200 sq. ft.



Project centerpiece. The reconfiguration of the middle of the house opened the kitchen to the living room by replacing a solid wall with a structural wood screen.



Smart and sophisticated. Basalt gray porcelain tile in the master-bath shower and tub provide a nice contrast with the vanity area's warm Douglas fir and hemlock woods.

up the centermost space to improve flow, and expanding the master bath—here, too, window upgrades were integral to the design program. At the Mid Mod Eichler House, Klopff Architecture addressed the cramped family quarters by adding a guest room and an office, and reworking the bathrooms and storage spaces. All three remodels point to our belief as designers that the midcentury-modern style is worth preserving. Our shared goal is to respect the original house, improve its performance, and balance the budget.

Minimal ornamentation and modest materials

By the time modernism had flourished in suburban America, minimalism was well established as a native language. Theorists like Adolf Loos, who declared, “ornament is crime,” and practitioners such as Le Corbusier and Philip Johnson, rebuked traditional ornamentation in favor of a cleaner, “machined” aesthetic. White interiors, strategic pops of color, crisp detailing, glassy facades, bare materials, and an overall absence of decoration became the standard. In midcentury-

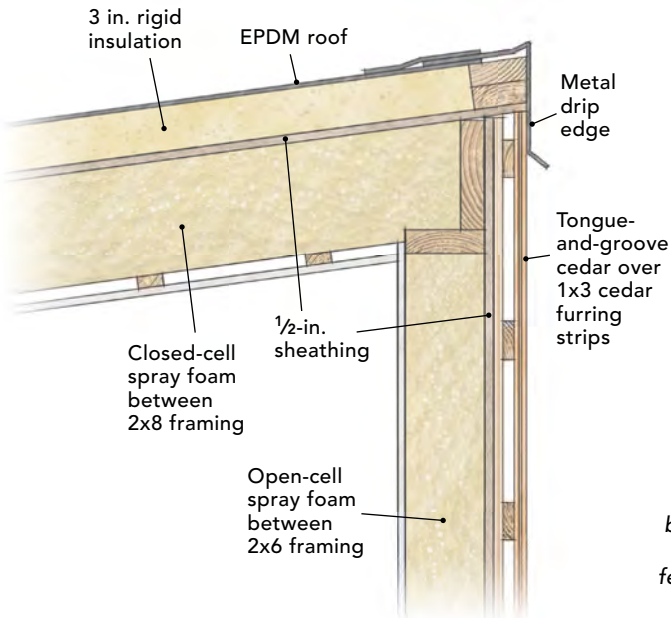
modern homes, walls, floors, and ceilings meet head-on—without fussy trim or moldings to cover up imperfections. Windows and doors are detailed with plaster returns, or they run tight from floor to ceiling. Simple plywood paneling on ceilings and walls is common, and exposed roof decking is intended to be ornamental in and of itself. Exterior details are similarly understated, with a materials palette typically consisting of concrete, tongue-and-groove cedar, plywood, brick, and stone. The elemental components of the building's structure are its visual allure. Building on rather than detracting from these qualities should be a primary goal of contemporary architects and builders.

Interior/exterior connections that don't bleed energy

Early modernism came on the heels of the Industrial Revolution—a time when dark, polluted, and crowded conditions were ubiquitous. As modernism took root, its founders imagined a future full of light, fresh air, and open spaces. When the movement came to the United



Beefed-up performance. Both the existing roof and the new addition include several layers of rigid-foam insulation and provide an R-value higher than required.



Masterful bath. The modernist treatment in the master bath leaves the space feeling light and airy.



States, it merged with American ideas about the relationship between humans and nature set forth by thinkers like Muir and Thoreau. It also responded to post-war policies and economic trends, which led to the development of suburban communities as families migrated out of cities and into the environs beyond. These factors resulted in mid-century-modern homes that prioritized connections between inside and outside, such as living spaces oriented toward the surrounding landscape. This was achieved, in part, by using much more glass than had been the custom.

However, these original expanses of glass pose technical challenges today, when energy efficiency is often a high priority. Original mid-century window and glass-door assemblies are typically steel-framed units or field-glazed windows—all single-paned and without thermal breaks. These windows, while featuring sightlines that maximize views, perform poorly in terms of energy efficiency. Such units

need reglazing or replacing—even in temperate climates—in order to achieve thermal comfort, much less meet current energy standards.

Today's architects and builders have a number of options for upgrading windows and glass doors. At the highest end, specialty manufacturers make steel-framed windows and doors that feature mid-century-style sightlines with double- or even triple-paned insulated glass. Many manufacturers, such as Arcadia and LaCantina, also offer large-format door assemblies with a range of options and high-performance glass. Although such assemblies were not available half a century ago, their integration into mid-century homes complements the original objective of connecting interior spaces to the landscape.

Of course, midmarket solutions are more cost-effective. For direct-set units, custom insulated glass units (IGUs) can be field-glazed into modified wood frames. This strategy mimics mid-century detailing almost exactly, and IGUs can be sized to fit existing

ROOM TO WORK



Linear divide. A 15-ft. custom plywood unit encloses common closet items as well as overflow from the kitchen and living room, plus an electronics hub.



In the details. Plaster returns at windows, a simple recessed baseboard, and Fry Reglet reveals around the trapezoid windows at the foyer align with original details.

SPECS

Location: Lexington, Mass.

Architect: Hisel Flynn Architects

Original architect: Walter Pierce

Builder: Porter Builders

Year built: 1956

Project completed: 2017

Size: 2150 sq. ft.

Hisel Flynn Architects in Lexington, Mass., addressed the expansion and renovation upgrades requested at the Peacock Farm House. At roughly 1750 sq. ft., the original home had a cramped entryway and insufficient space for the clients to set up a comfortable home office. Spanning much of the front facade, the 500-sq.-ft. addition houses a generous foyer, as well as an office and workshop below. Aluminum-clad units from Marvin's Contemporary Studio collection were selected for operable windows; the large, fixed trapezoid windows at the front facade are custom IGUs with cedar frames; and a deep roof overhang provides shelter from the harsh New England weather. By expanding the upstairs bathroom into the master bedroom, the team made space for both a soaking tub and a separate shower; there was also room enough for a bedroom nook, where new custom-built drawers and cabinets supplement the small original closet. A third bedroom was turned into a home office, beneath which a utility room was transformed into a workshop featuring large glass doors that provide outdoor access, views, and ventilation.

openings. For operable units, many popular window manufacturers offer aluminum-clad windows. Although their frames are typically chunkier than original midcentury steel windows, their clean detailing, minimal maintenance requirements, and reasonable price point make them attractive alternatives.

Minimal style without minimized comfort

By the middle of the 20th century, developments in building technology enabled structures to be taller and lighter. Residential architecture echoed this trend with simple framing and exposed structural members. The slender, lightweight assemblies common among midcentury homes often fail to meet today's structural codes. They almost always pose challenges when it comes to insulation retrofits, as wall and roof cavities are too slim to achieve the R-values required by today's energy codes, even with high-performance insulation materials.

A range of approaches can be taken. At a minimum, when opened up, existing assemblies must be filled with insulation, and new assemblies must meet current energy and structural codes. But in order to maintain the effect of exposed structure and slim assemblies, creativity is required. At the Peacock Farm House, the clients had added 3 in. of rigid-foam insulation (R-12) to the top of the original roof assembly, so we did the same to the addition. But to reach the required R-49, we also added closed-cell spray foam between the addition's 2x8 rafters, which, in order to meet structural code, we installed at 12 in. on center rather than the standard 16. The combination of closed-cell spray foam and rigid-foam insulation reached R-57, exceeding the required R-value. □

Katie Flynn, AIA, is a principal at Hisel Flynn Architects, a boutique firm specializing in modern residential architecture.