

PRO HOME

Elevating the Standard of Building

Exterior claddings and durable interior finishes
create a resilient and attractive home

BY SEAN GROOM



FOLLOW THE BUILD

Beginning with *FHB* #260, we've been exploring the theory and logic behind our demonstration home. Be sure to visit FineHomebuilding.com/prohome regularly to watch the construction of the house unfold and to hear expert insights straight from the design-and-build team.

WATCH our multi-part video series highlighting every important step of the project.

GET UPDATES on the build and special events by following us, our project partners, and #proHOME on social media.



Building the ProHOME in the aesthetic of a traditional farmhouse dictated bevel siding and time-honored paint colors, but that didn't mean modern materials and methods were off the table. Engineered siding provides a durable, low-maintenance exterior, and the paint will last longer

thanks to a ventilated rain-screen assembly. Accent siding with mitered corners and a deck with cable railings are signs that the traditional aesthetic gives way to a modern design in the interior. The contemporary feel there announces that the house isn't stuck in the past, but the lack of ornamentation and the monochro-

matic color scheme simplify maintenance in a rental property. The appliances in the ProHOME confirm the modern bent and offer both efficiency and convenience.

Sean Groom is a contributing editor. Photos by Brian McAward, except where noted.



A TRADITIONAL LOOK WITH LOW-MAINTENANCE MATERIALS

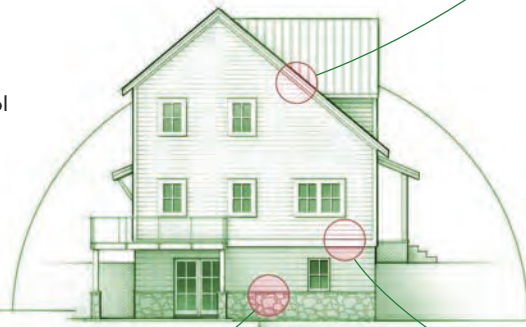
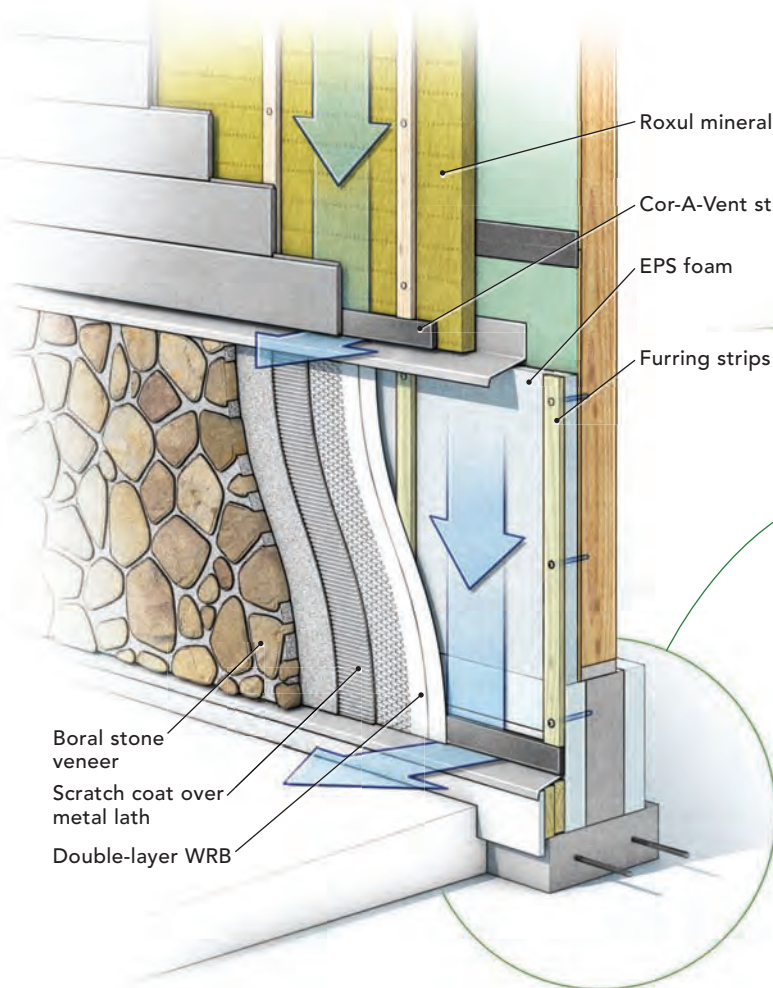
In keeping with the farmhouse design, most of the house is clad with a 4-in.-reveal clapboard siding painted a classic farmhouse white. This cladding and trim, Boral TruExterior, is a poly-ash exterior board made from a combination of refined coal fly ash, glass fibers, and polymers.

These poly-ash boards have several advantages over wood and PVC products. They aren't affected by moisture or heat, they're rated for ground contact, they can be painted dark colors, and their end cuts don't need to be primed or sealed. The material's performance is similar to fiber-cement siding, yet TruExterior is lighter—closer to the weight of wood—with a flexibility approaching that of PVC boards.

To add visual interest, designer Michael Maines chose a tongue-and-groove siding, TruExterior nickel gap, for the shed dormer. Run horizontally, detailed with mitered corners, and painted a warm gray, this accent siding not only provides an aesthetic break with the traditional clapboard on the rest of the house, but it also creates a fictional history that suggests both dormers were added at a later date. The same siding continues around the front door to help draw the eye to the entry.

The 1x3 strapping that holds the Roxul exterior insulation in place creates the ventilation space behind the siding (a best practice). At the top and bottom of the wall, Cor-A-Vent SV5 vents allow the passage of air and water. Furring creates a pocket at the corner boards and windows, much like a J-channel, so the bevel siding tucks behind the trim.

A facade of Boral Cultured Stone applied to the exposed foundation and as a wainscot around the walkout basement completes the farmhouse look. Maines selected a mix of three colors to blend with the local stone, which is used to create retaining walls around the site and to provide a traditional-looking foundation. To make the stone in plane with the siding above, builder Mike Guertin furred the stone out from the wall, creating an air gap between the exterior insulation and the water-resistive barrier (WRB) and metal lath that the scratch coat is applied to. (Areas where Cultured Stone is used require EPS rigid foam rather than the semicompressible Roxul mineral wool, which isn't an appropriate base for the heavy stone veneer.)



Durable cladding. Maines selected a mix of three colors of Boral's Cultured Stone—a manufactured stone veneer—to reinforce the look of an older farmhouse. Equally impervious to water is the traditional-looking bevel siding and trim—an engineered poly-ash product also made by Boral.



ELEVATING THE STANDARD

Cor-A-Vent ventilation products

Ventilation ensures that unconditioned attics and siding perform at their best. A ridge-and-soffit vent system are standard construction details, but the ventilated rain screen of the ProHOME that allows the sheathing and both sides of the siding to dry isn't standard practice. The 3/4-in.-thick Cor-A-Vent SV5 siding vent at the base and the top of the siding matches the thickness of the ventilation furring. The honeycomb structure allows water to drain and air to flow through, plus it keeps insects at bay. It's constructed of thermally stable, crush-resistant, extruded polypropylene sheets that can be screwed, nailed, or stapled in place.



A CLEAN, MODERN RAILING

Aesthetically, the deck will break up the tall walls above the walkout portions of the basement, adding some visual relief. At nearly 400 sq. ft., the deck will offer plenty of outdoor space for entertaining. The Feeney DesignRail aluminum posts and rails with stainless-steel cable infill create a clean, modern look with a relatively unobstructed view. An integrated LED rail lighting will reinforce the modern appearance. The decking will be either a hardwood or a composite product depending on cost and availability.

