



Details From a One-of-a-Kind

Custom cabinetry, a curvaceous island, and unique materials make a kitchen

It's fun to see dramatic before and after photos of old, derelict kitchens transformed into sleek, modern spaces. This kitchen, however, was still in pretty decent shape as we found it. Sure, it was a bit cramped and suffered from poor circulation, and the dark countertops and traditional upper cabinets weighed down the space a bit. But the real problem was that it was

removed from the living and family rooms. That's not what families want today.

The homeowners asked me to design a new kitchen that would connect better to their active lifestyle, which can include one person cooking while another is doing homework and a third is watching TV, all wanting to be close and feel connected. They were looking for spaces that would create

intimacy without crowding. They wanted a great space that could serve as a multipurpose center for most daily family activities.

My instinct was not only to rearrange the spaces but to expand them so that the kitchen and family room could become the heart of the house. These spaces were situated on the middle of three floors, so pushing the exterior kitchen-and-family-room wall out 10 ft.



10 MORE FEET TO WORK WITH

With a 10-ft. addition, the design work was a matter of making the most of the new footprint and connecting the adjacent spaces. To enhance a sense of togetherness, the dining room was relocated, allowing the kitchen to open directly to the family room. Although there are activity-specific spaces in the new plan, the improved design allows everyone to be together even when pursuing individual activities.

Kitchen

remodel special

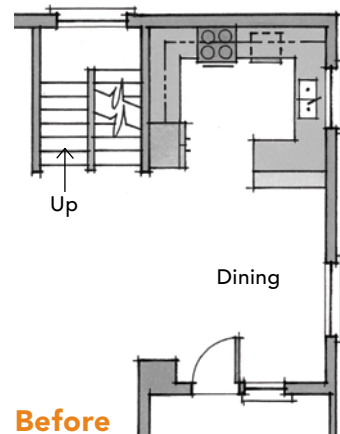
BY RICHARD SHUGAR

would also expand one of the bedrooms on the level below and create the opportunity for a balcony off the master bedroom above. The homeowners were delighted with the plan.

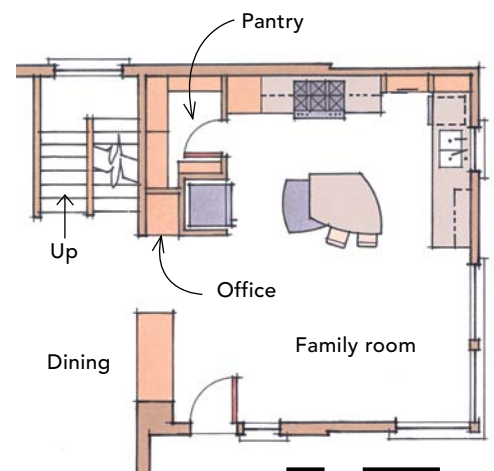
The new kitchen is bright, welcoming, and playful. It is designed to be a place to hang out, a functional room that can simultaneously meet the needs of children, parents, and guests. It is a place where several people

can cook, where kids can work on projects, and where interaction is encouraged. And it is unique in both design and materials. □

Richard Shugar is principal architect at 2Form Architecture in Eugene, Ore. (2-form.com). Construction by Dennis Coduti General Contracting. Photos by Brian Pontolilo, except where noted.



Before



After

0 2 4 8 ft.

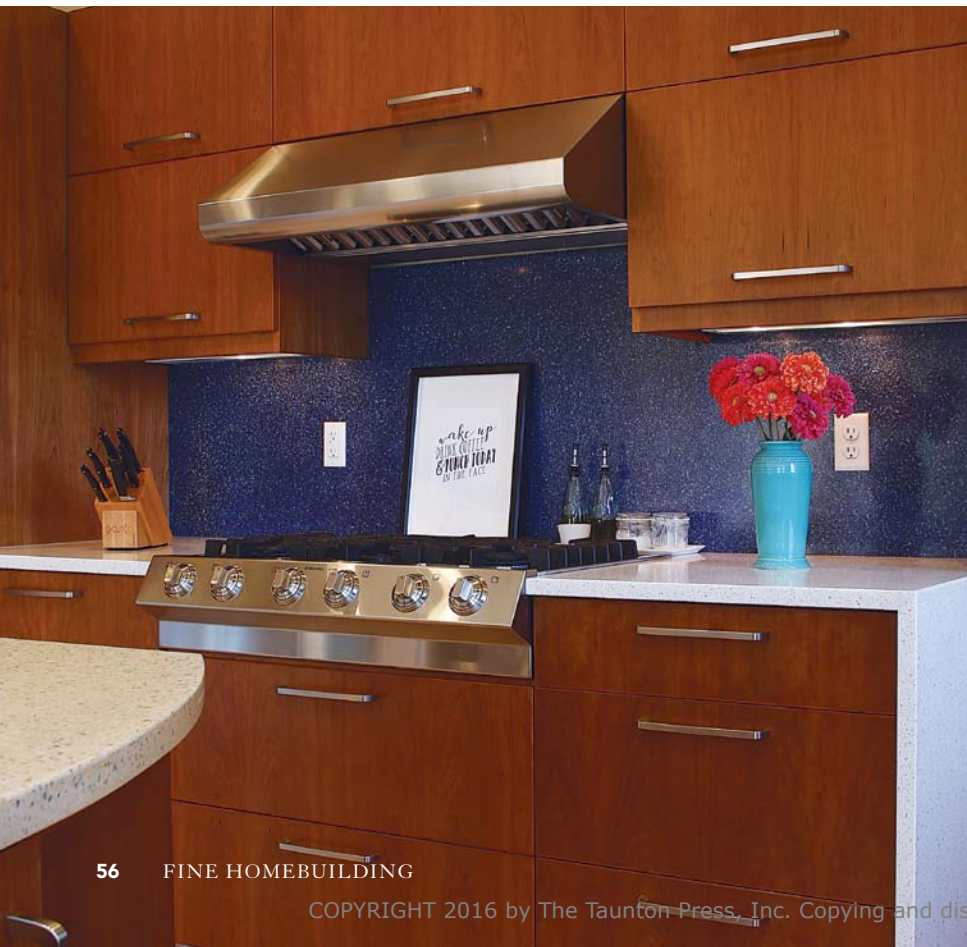
THE NUCLEUS OF THE KITCHEN

The island was designed to accommodate people working on different types of food preparation. The quartz counter is standard height for most tasks. The lowered area with its stainless-steel top is intended for baking; at 30 in., it's a good height for kneading dough. Curves make the island comfortable to work around and provide an organic quality that contributes to the playful, welcoming character of the space. The island is a multifunctional place to cook, do homework, entertain, pay bills, or enjoy a casual meal. Cookbooks are tucked neatly into shelves carved into a niche on one side of the island, while the microwave is hidden in a slot on the opposite side.



A SPARKLE FOR THE COOK

Framed by a white quartz top with a waterfall edge, the frameless cherry cabinets are highlighted in the cooking area. The cabinetry was built by a local cabinetmaker, Skyline Fine Cabinets. The backsplash is a recycled metal and resin product called Alkemi. This durable and easy-to-clean solid-surface material provides a hint of drama to the kitchen. Undercabinet lighting washes the sparkly backsplash with light while illuminating the worksurface below.



SMART STORAGE MAKES A GREAT KITCHEN

Much of the kitchen's storage is located in this corner, which is easily reached from the island, cooking area, and sink. Custom pull-up doors allow the wall cabinets to be accessed without doors getting in the way. The countertop appliance garage, with its tambour door from Häfele, keeps the bread

maker and other small appliances hidden when not in use. Dishware storage is located behind translucent Lumicor-panel doors. These panels add dimension and openness to a wall of cabinets, and the sliding doors make it easy to access the dishware shelves.



Home office. Located just around the corner, a small nook stores the office supplies often used at the island and is outfitted with the same custom cherry cabinets as in the kitchen.