

Beautiful Baths

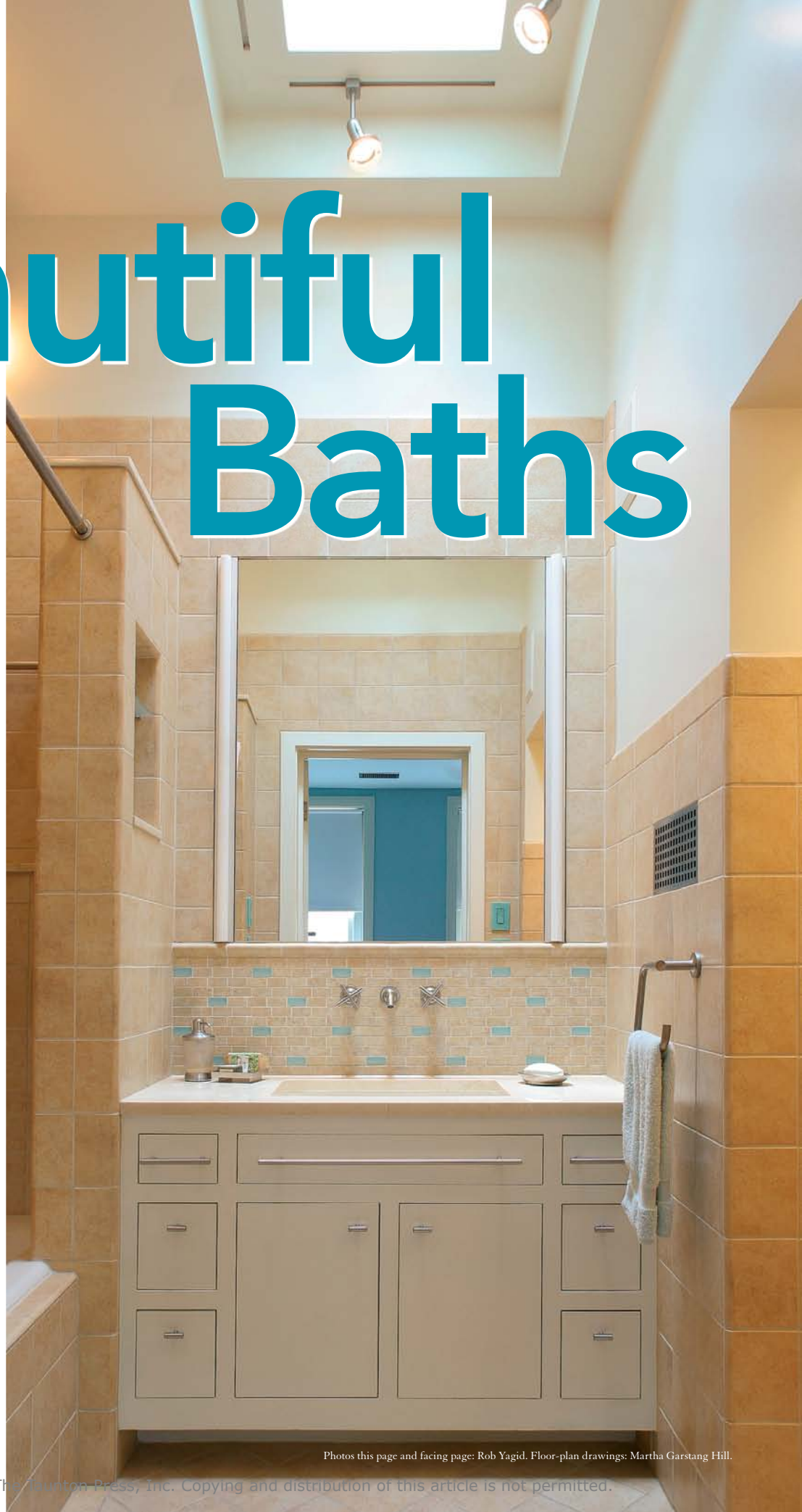
These five bathrooms prove that good things do indeed come in small packages

COMPILED BY
MAUREEN FRIEDMAN

Chances are if you live in a small house, you also live with a small bath. But that doesn't mean that you're limited to a room with a lackluster layout and tiresome materials. With thoughtful floor plans, innovative storage solutions, and well-appointed fixtures and materials, these five small baths show how they make the most of the space they've got.



To view a slide show of more small-bath ideas, go to FineHomebuilding.com/extras.





MAKE IT YOURS

Faucet Kohler Purist, brushed-nickel finish

Showerhead Kohler Purist, single function

Backsplash Ceramica Magica Perla mosaic in keshi gold; Boyce & Bean sea-green mosaic accents

Floor Casa Dolce Casa glazed Tuscania tile

Vanity top custom crema-marfil marble by Stone & Tile World in Rockville, Md.

Sink Kohler Kathryn

Tub Kohler Tea-for-Two

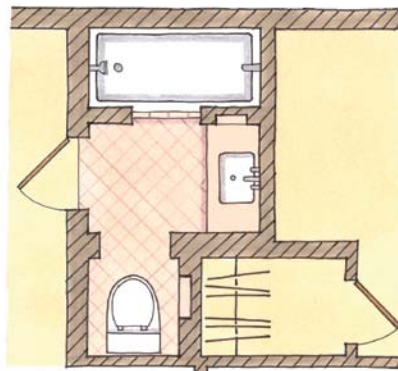
Toilet Kohler San Raphael



A MASTER BATH CARVED OUT OF CLOSET SPACE

Renovation plans for designer John Boatman's 1911 Washington, D.C., town house included adding a master bathroom where no bath had existed. Boatman reorganized an awkward floor plan, moved a few nonbearing walls, and relocated two bedroom closets to create enough space for a cozy, 60-sq.-ft. spalike master bathroom. To give the room a more expansive feel, he also raised the ceiling to 10 ft. and added a skylight. The custom-built vanity, which holds a sink that was selected for its width and narrow depth, allows for as much open floor space as possible.

The clean, uninterrupted tile backsplash was possible because GFCI outlets and light switches were hidden in a false vanity drawer. Boatman incorporated storage for towels and other bathroom necessities in the 7-in.-deep recesses in the walls near the vanity and in the 36-in. by 42-in. water closet.



DESIGNER John Boatman, Washington, D.C.

CONSTRUCTION John Boatman and Carlos Gonzalez



MAKE IT YOURS

Electric-radiant floor Nuheat

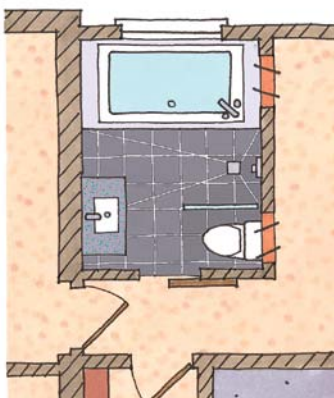
Showerhead Centurion

Toilet Toto CST414M

Recycled-content mosaic tile Oceanside Glasstile

Recycled-content countertop Novustone

COOL COLORS, WARM FLOOR



As master bathrooms go, this one is about as compact as they come. In a space just 7 ft. by 9 ft., architect George Ostrow managed to fit a 6-ft. tub, a separate shower, a vanity sink, and a dual-flush toilet. A suspended-glass partition separating the shower from the toilet enables the wet areas to coexist with the dry despite the tight quarters. A generous mirror at the sink,

a clerestory window over the tub, and custom wood shutters create a sense of openness. The shutters pivot on vertical axles, opening to the adjacent master bedroom for ventilation and light when privacy isn't an issue. The bath's focal point is the glass-mosaic tub apron. Its pattern is a custom gradient of four colors that transition from dark to light. The dark-gray

ceramic floor tile turns the whole room into a shower pan with a gentle slope to the brass floor drain. An electric radiant-heat mat beneath the tile floor keeps it toasty. Fabricated from cherry-veneer plywood, the vanity cabinet is cantilevered from the wall so that water can flow beneath it. The vanity is topped with a counter that is composed of 75% recycled glass.

ARCHITECT George Ostrow, Velocipede Architects, Seattle

BUILDER Michael Vacirca, LastingNest, Seattle



MAKE IT YOURS

Showerhead Kohler Taboret, polished chrome

Shower control Kohler Purist, polished chrome

Toilet Kohler Rialto

Sink Kohler Bolero Round, mirror finish

Faucet Kohler Triton Wide-spread Base with gooseneck spout, polished chrome

Paint Benjamin Moore, Blue Seafoam

Floor/base tile Walker Zanger, D-Line, 12-in. by 12-in. ceramic, Standard White

Wall tile Walker Zanger, Fusion, 1¼-in. by 1¼-in. glass, Mosaic Pearl

Skylight Velux

Rolling door 1-in. acrylic panel, with McMaster-Carr I-Beam Roller Track Set

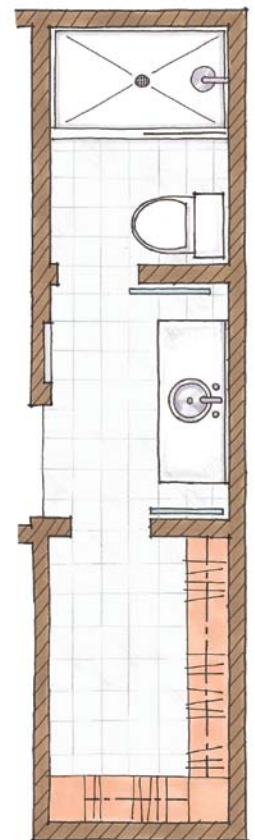


STAY INSIDE THE LINES

Working within the footprint of the existing bath, architect Eric Dumican transformed a claustrophobic windowless bath into this inviting retreat. Dumican's plan for the new bath kept all the fixtures and walls in the same place but added an operable skylight over the shower to funnel daylight into the room. The central lavatory space is flanked by translucent sliding doors; one leads to the shower room, and the other to a walk-in closet. Made of 1-in.-thick acrylic panels, the doors are sandblasted on one side. When closed, the showerside door is a luminous plank that lights up the serene blue walls. Methodical and orderly, rectilinear details such as the square glass tiles in the shower, the inset tile baseboards, and the powder-coated steel vanity bring polish, light, and a modern touch to this recast bath. The new vanity floats above the floor, its shape echoed by the soffit above.

DESIGN Eric Dumican, Dumican Mosey Architects, San Francisco

BUILDER Abela Construction, San Jose, Calif.



0 1 2 4 ft.

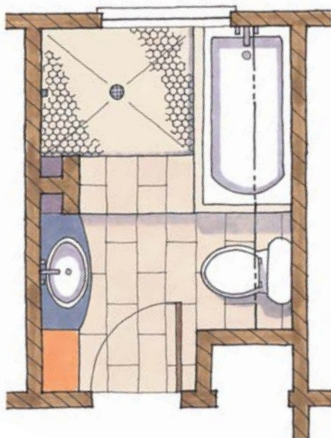


SINGULAR AND SERENE

Architect Cindy Black redesigned this 6½-ft. by 9½-ft. space, the only bathroom in a 1950s-era house, with soft curves and light colors to evoke a calm, spalike environment. The floor and tub-wall tiles are 9-in. by 18-in. apple stone, a velvet-smooth limestone from Turkey. The back wall of the open shower wet area is tiled with Akdo Icelandic blue-glass tile in a staggered pattern. “Floating” shelves of rift-sawn white oak installed above the 55-in. bathtub are supported by invisible brackets from Häfele. The illusion of weightlessness is repeated at the sink counter, which is held up with a steel support attached to the wall framing. The egg-shaped sink is matched with a curved countertop of dark Caesarstone, the same material used for niche shelves in the shower and beside the sink.

ARCHITECT/DESIGNER Cindy Black, Hello Kitchen, Austin, Texas

BUILDER David Wilkes Builders, Austin, Texas



0 1 2 4 ft.



MAKE IT YOURS

Tub Sunrise Specialty, built-in

Faucet, showerhead

Kohler, Stillness line

Sink Whitehaus Collection, Isabella

Frameless oval pivot mirror, hardware

Restoration Hardware

Countertop Caesarstone

Apple-stone limestone

Architectural Tile & Stone



MAKE IT YOURS

Faucet Hansgrohe

Sink Stone Forest Moso Bamboo Vessel

Lights Barn Light Electric Raindrop Sconce

Tub Kohler Tea-for-Two

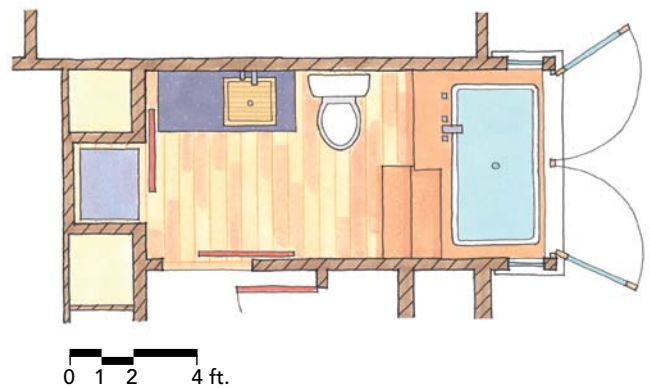
Tub faucet Price Pfister

Vanity cabinet Eastern Classics

Vanity top Custom concrete by Bohemian Stoneworks

Sliding-door carvings Jordy Morgan

Windows Loewen



SMALL-BATH SERENITY

Working within the existing 6-ft. by 10-ft. footprint required that space-saving solutions be implemented to make this bathroom more functional. Architect Anni Tilt redesigned the space to position the tub in a new window bay, a less costly and less complicated option than building a full addition. The new window also visually expands the small room. The tub is set into a tansu-inspired surround made of salvaged fir. In the style of traditional tansu cabinets, the steps double as storage space. A custom Asian-inspired fir vanity was built to fit the room. The bathroom door was replaced with a custom-carved sliding door. The slatted ceiling of salvaged Douglas-fir boards provides texture as well as acoustic dampening.

ARCHITECT Anni Tilt, Arkin Tilt Architects, Healdsburg, Calif.

BUILDER Earthtone Construction, Sebastopol, Calif.

